



**THS**

TRANSPORT  
HYDRAULIC  
SOLUTIONS



 **HARSH®**

# **HARSH A5-D40 STABILISED TIPPING GEAR**

**Free Call Now**  
**NZ 0800225569 AU 1800225569**  
**[www.transporthydraulics.com](http://www.transporthydraulics.com)**

# HARSH A5-D40 TIPPING GEAR

	Tipping Capacity (Tonne)	Body Length (mm)
A5	2.0	2500
A6	3.0	2500
B10	5.5	3000
C20	6.5	3300
D40	9.5	3500

## Features:

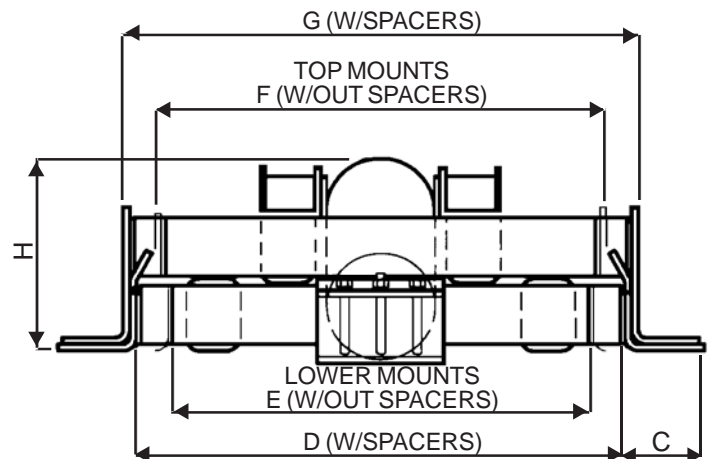
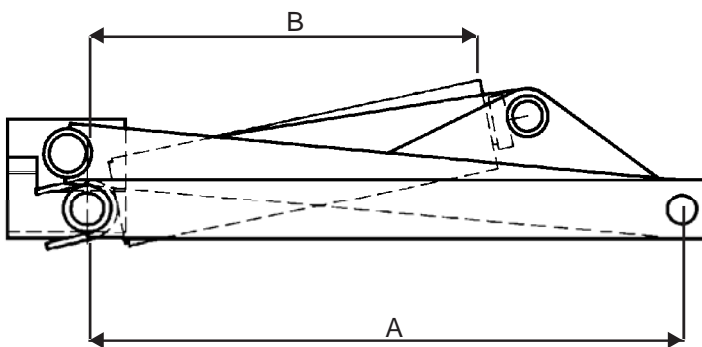
- ✓ Double acting cylinders.
- ✓ High polished hard chrome cylinders.
- ✓ Fast tipping cycle.

## Benefits:

- ✓ Vehicle/body versatility.
- ✓ Dynamic stability in tough environments.
- ✓ Built and tested to last longer.
- ✓ Ease of maintenance.

Capacity and length are averages based on:

- Mount length providing 45° tipping angle.
- Diminishing load.
- 200mm tail hinge overhang.
- Maximum operating pressure.



## DIMENSIONS

	A5	A6	B10	C20	D40
<b>A</b>	560	711	730	889	1019
<b>B</b>	370	N/A	489	587	672
<b>C</b>	N/A	N/A	197	197	197
<b>D</b>	N/A	N/A	690	690	690
<b>E</b>	362	438	605	605	605
<b>F*</b>	362	438	640	640	640
<b>G</b>	N/A	N/A	730	730	730
<b>H</b>	152	179	232	267	270

\* This dimension is a minimum.

Note:

Dimension 'E' can be increased to reduce the amount of chassis flange overhang by pulling the chassis brackets outwards as required up to a maximum of 35mm a side or by utilising the spacers provided.